

2008 Intensive Research Ethics Course Speakers' Brief Bio data

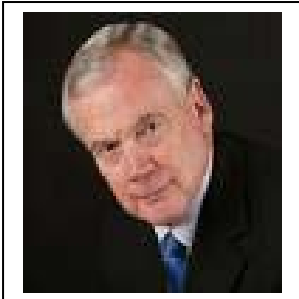
Conveners:



Contact:
Monash University
Department of Medicine
Alfred Hospital Commercial
Road Prahran, Vic, 3181
Tel - 03 9276 2000
Email -
paul.komesaroff@med.monash.edu.au

Professor Paul Komesaroff is a physician, medical researcher and philosopher at Monash University in Melbourne. He is Director of the Monash Centre for the Study of Ethics in Medicine and Society, Director of the Clinical Ethics Service at the Alfred Hospital, Ethics Convener of the Royal Australasian College of Physicians, Convener of the Global Reconciliation Network and Chair of the Health and Development Alliance. He is a Past President of the Australasian Bioethics Association.

He is the author of more than 250 articles in the fields of science and ethics and author or editor of twelve books, including *Experiments in Love and Death* (Melbourne University Press, 2008), *Pathways to Reconciliation* (Ashgate, 2008) *Objectivity, science and society* (Routledge, 1986, 2008), *Troubled bodies: Critical perspectives on postmodernism, medical ethics and the body* (Melbourne University Press, 1996), *Reinterpreting menopause: Cultural and philosophical issues* (Routledge, 1996), *Drugs in the health marketplace* (Arena, 1994), and *Sexuality and medicine: Bodies, practices, knowledges* (Xlibris, 2004). He was convening editor of *The Australian human research ethics handbook* (Aust Government, 2002). He is the Chair of the Editorial Board of the *Journal of Bioethics Inquiry*.



Contact:
Faculty of Law
University of Wollongong
Email: cthomson@uow.edu.au

Professor Colin Thomson is a solicitor and barrister in the Supreme Courts of NSW and the ACT, and was most recently a consultant to the NHMRC on health ethics. He has been a member of AHEC in two previous NHMRC terms, including as deputy chair from 2000-03. Professor Thomson's major interests include the intersections of law, ethics, medical and life sciences and health care. His current appointments are Professorial Fellow, Faculty of Law, University of Wollongong and Adjunct Professor, Faculty of Law, Macquarie University. Professor Colin Thomson is chair of the HREC.

Colin graduated in Arts and Law from the University of Sydney and has held positions at the Faculties of Law at the University of Wollongong and the Australian National University, where he introduced teaching in medicine and law. He has since taught at undergraduate and postgraduate levels and written widely on law, ethics and medicine. With colleagues from the University of Wollongong he completed a report for the Commonwealth Department of Health and Human Services on the Ethical Conduct and Review of Social and Behavioural Research. From 1988-91 he was a member of the Medical Research Ethics Committee of the National Health and Medical Research Council and from 1997-2000 of that committee's successor, the Australian Health Ethics Committee (AHEC). He was closely involved in the drafting of the National Statement on Ethical Conduct in Research Involving Humans and from 2000-2002 as AHEC Deputy Chair, in the completion of the Human Research Ethics Handbook.

SPEAKERS:



Bernie Slagman has been involved with the Alfred Hospital as a patient since 1995. Suffering from what was then considered a terminal illness, Bernie became involved in many clinical trials and research projects. Bernie has been enrolled in projects at The Alfred, Monash Medical, Swinburne University, and the Royal Melbourne Hospital. Amongst others these involved Neuropathy, Diabetes, Immunology, Lipodystrophy, Lipids, Neurology, Anaesthetics, Nutrition, Naturopathy and Depression.

In addition to this, Bernie has partaken in various reviews and ethics issues within The Alfred hospital. His story is touching in that one extreme involved a drug trail which nearly killed him due to drug toxicity as well as trials finally managing to keep him alive and healthy as you find him today. Bernie has been involved in trials and research in the interests of his health, that of others and in the hope that life saving developments may eventuate for those in need be they in Australia or less developed countries. Of recent times, better health has allowed Bernie to focus more on the needs of the blind establishing a new charity Visual Independence which helps the blind with the development of a talking barcode scanner to enable product identification.

Contact Bernie on 03 9853 9880 mobile 0402 85 98 85



Professor Ben Canny is Monash University Human Research Ethics Committee Chairman and past President of The Endocrine Society of Australia (ESA), a national non-profit organisation of scientists and clinicians who conduct research and practice in the field of Endocrinology. He is based at the Department of Physiology Building 13F Monash University VIC 3800 Australia Clayton Campus



Associate Professor Brian Stoffell

Brian teaches within the Health Sciences at Flinders University. His fields are philosophy, history of ideas, bioethics and law. His doctoral work at British Columbia was in early modern political theory and his recent law honours thesis was entitled "Mind Death: PVS and the Law". Since 1989 Brian has directed the work of a Health Ethics Unit situated at Flinders Medical Centre/University and has supported endeavours within the SA Department of Health's ethics portfolio (e.g., Reproductive Technology Council, development of health legislation and latterly the review of advanced directives in SA law).

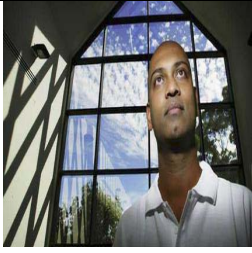
After a long history with many research and clinical ethics committees, quite a few of which he founded, Brian became chairperson of the newly created Bellberry Human Research Ethics Committee in 1992. This Adelaide based committee operates as a free standing non-institutionally based HREC and is incorporated as a not for profit organisation. Since its inception it has returned a very significant amount to medical research endeavours in a number of Australian states, as well as contributing funds to health care ethics related education at Universities.

While a lot of health ethics is fixated on orchestrating death within hospital and clinical situations, there are complex and vexing issues faced by professionals in pre-hospital emergency care that are scantily treated in the literature. Brian's current work is directed to a better understanding of the law and ethics of emergency care in particular and emergency services more generally.



Cameron Stewart is an Associate Professor in Law at Macquarie University and an Honorary Associate Professor in the faculty of Medicine at University of Sydney. Cameron is a Solicitor and Barrister of the High Court of Australia and a Legal Practitioner of the Supreme Court of New South Wales. He has practised commercial law at Phillips Fox Lawyers. He is also a Board Member of the Australian Institute of Health Law and Ethics.

Cameron has a doctorate from the University of Sydney on end of life decision-making. He has published widely on this topic and hopes to continue to research in this area. Cameron is also interested in the history of Australian property law. He teaches in this subject at Macquarie and hopes to further the cause of a uniquely Australian property law. In 2002 he was invited to join the Working Party for the Guidelines on End-Of-Life Decision-Making, NSW Health Department. His main responsibility was to redraft the guidelines on refusal of treatment and advance directives. His expertise concerning advance directives also led him to joining the newly formed Advance Directives Working Party, NSW Health Department, at the end of 2002. Both bodies are charged with the creation of policy and giving the Minister advice about changes in legislation. He is also a Foundational Member of the Clinical Ethics Advisory Committee, NSW Health Department (formed 2003). This committee was formed to give advice to the Chief Medical Officer on ethical difficulties with clinical matters. More recently he has been working with Sally Bolton to help Alzheimer's Australia update their information on legal issues for people with dementia.



Suresh Sundram is a psychiatrist and Associate Professor of Medicine at the University of Melbourne. He is the Head of the Molecular Psychopharmacology Unit at the Mental Health Research Institute of Victoria, Head of MHRI research for the Depression Awareness Research Project (DARP) and Clinical Director of the Northern Area Mental Health Service and Northern Psychiatry Research Centre.



Jeanne Daly trained in the physical sciences, environmental science and sociology. She specialises in using qualitative methods in research that addresses clinical problems. She is editor of the *Australian and New Zealand Journal of Public Health* and has an adjunct appointment in Mother and Child Health Research, La Trobe University, Melbourne. One of her books is *Evidence-based medicine and the search for a science of clinical care* (University of California Press and Milbank Memorial Fund, 2005). She drew on this analysis to propose a hierarchy of evidence for qualitative research (Daly J. Willis K. Small R. et al. A hierarchy of evidence for assessing qualitative health research. *Journal of Clinical Epidemiology* 60. 2007. 43-49). She co-authored *The Public Health Researcher: a methodological guide* (Oxford University Press, 1997) devoted to the analysis of public health research across all methods and a number of her edited books derive from a commitment to debate on health research and research methods. She was editor of *Ethical Intersections: Health research methods and researcher responsibility* (Allen and Unwin, 1992).



Associate Professor Martin Delatycki is a medical graduate of the Uof Melbourne. Following paediatric training at the Royal Children's Hospital, he trained in clinical genetics at the Victorian Clinical Genetics Services (VCGS). In 2000 Martin was awarded a PhD by the University of Melbourne for his work in Friedreich ataxia.

Martin's main clinical and research interests are neurogenetics, community genetics and the ethical impact of the new genetics and genetic research.

Martin Delatycki is Director of the Bruce Lefroy Centre for Genetic Health Research based at the Murdoch Childrens Research Institute. In addition he practices as a clinical geneticist at Genetic Health Services Victoria.

